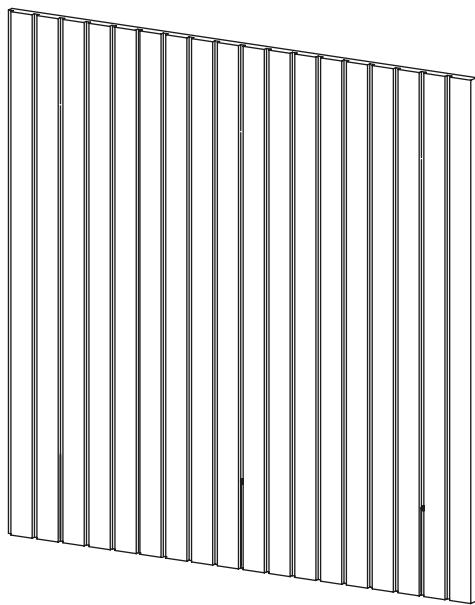


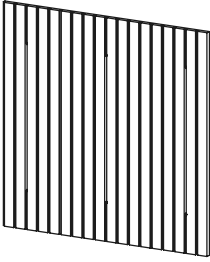
VicStrip Square

Installation Manual



✓ MATERIAL NEEDED

Included

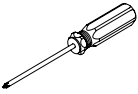


VicStrip

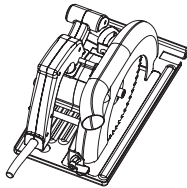


Screws (Only in the VicStrip single line version)

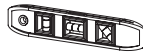
Not Included



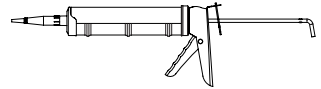
Screwdriver



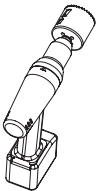
Circular saw



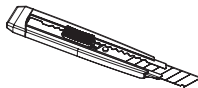
Level



Flexi Glue Ultra



Hole saw



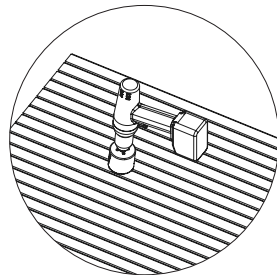
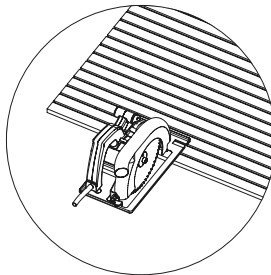
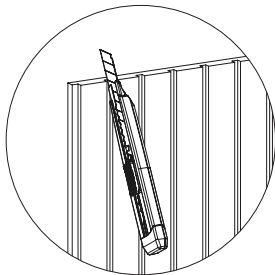
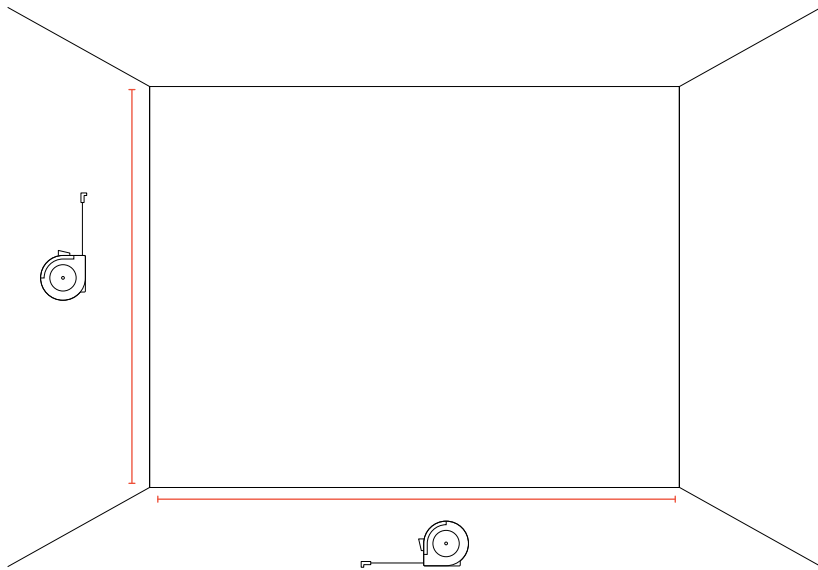
Box cutter



Measuring Tape

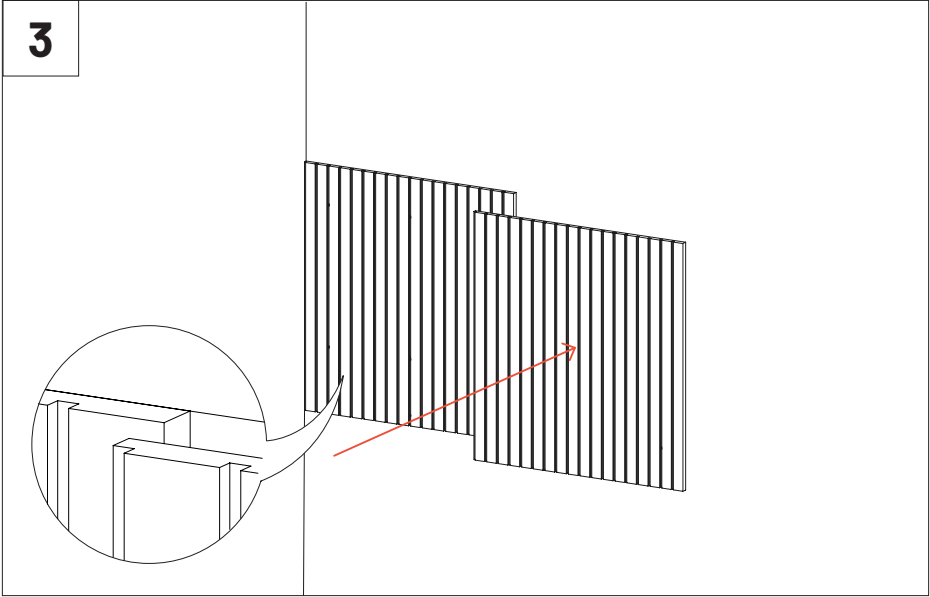
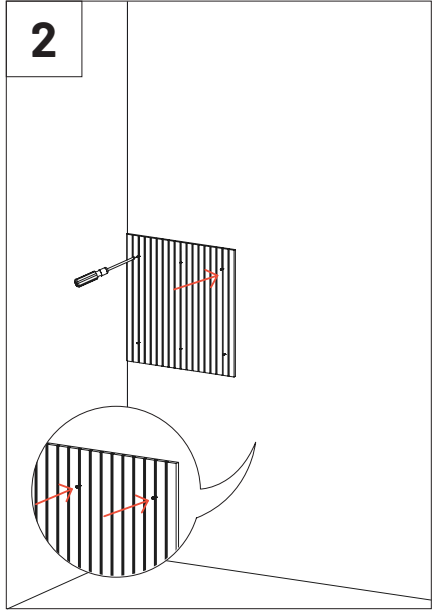
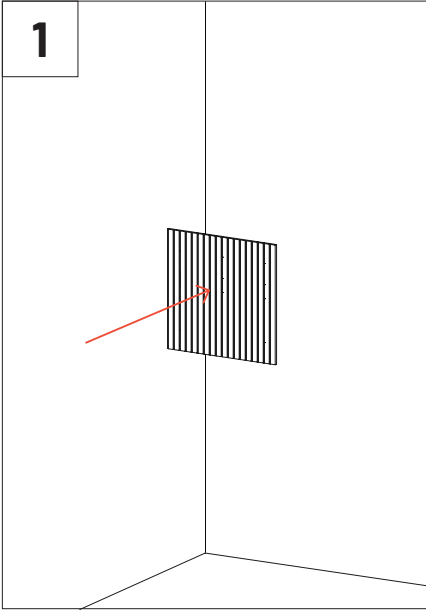
1

Before installing the panels, measure the wall where you are going to apply them. If necessary, make the necessary cuts to ensure a proper installation. The cuts can be done as indicated below.



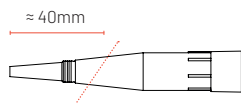
- Longitudinal cut following the PET groove, with the help of a box cutter.
- Longitudinal cut on the laminated area, with the help of a circular saw with \approx 60-Tooth blade.
- Transversal cut with the help of a circular saw with \approx 60-Tooth blade.
- Round hole with the help of a hole saw.

Wall installation with screws - For application to plasterboard walls or wooden structures, install the VicStrip with the screws provided, inserting them into the panel grooves and attaching them to the supporting wall or wooden structure.

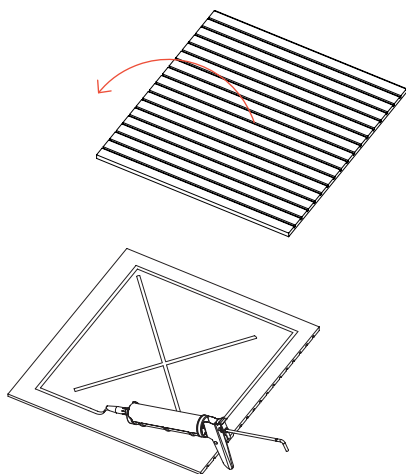


Wall installation with glue - For application on masonry or concrete walls, it is recommended to apply glue (not included).

Apply the glue on the back of the acoustic panel, according to the diagram. Place the panel on the suitably chosen position on the wall. Once in the desired place, press it firmly against the wall.



If the nozzle is not already cut, cut it according to the diagram.



Do not apply Vicstrip Square behind radiators or close to a heat source.

Vicoustic Vicstrip Panels (Non-Fr)

Not suitable for applications requiring fire-resistant materials.

This product is a decorative panel and is not a building component.

It is intended exclusively for use as a decorative element.

It is not covered by the harmonized standards for construction products or the Construction Products Regulation (Regulation (EU) No 305/2011).

HQ – Factory and Office

Rua do Polo 3, Nr. 151 – Freamunde
4590-335 Paços de Ferreira, Portugal
Tel: +351 255 070 044

Info and Sales

E sales@vicoustic.com

www.vicoustic.com



© Vicoustic, 2026 | V4

No parts of this document might be copied and/or published without written consent of Vicoustic.