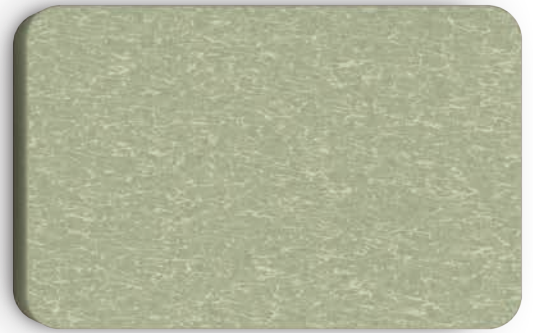
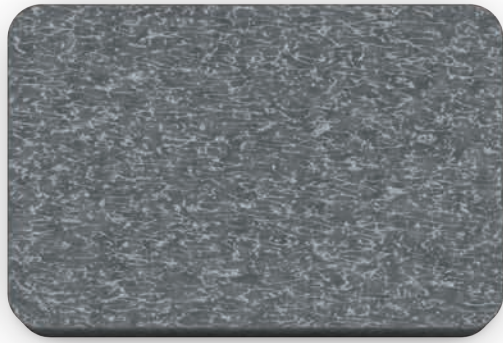


V/COUSTIC

*fresh colours  
– enhanced designs*

**HD PET Acoustic Solutions**







reddot winner 2025

# VicShape 3D wins Red Dot Award

VicShape 3D has been awarded  
the Red Dot Award 2025 in the  
Product Design category.

This year's competition attracted  
thousands of entries from around  
the world, with VicShape 3D standing  
out for its unique 3D geometry,  
sustainable material composition,  
and architectural versatility.



VicShape 3D Coral Haze



VicShape Coral Haze

# VicShape 3D

Winner of the Red Dot Award 2025 for Product Design, VicShape 3D board brings sound treatment to the world of framed relief art panels, combining Vicoustic's know-how in acoustic panels with an innovative design shape

Two versions available: Single (1 unit) and Duo (2 units)



Black



Glacier



Gleam



Pearl



Tornado

---

**Dimensions:** 1160x595x52mm / 45.7"x23.4x2.1" \*; **Raw Materials:** High Density PET, Pine wood with Oak veneer **Packaging:** 1 or 2 units/box; **Installation:** Hanging support bracket (included)

\* Dimensions per panel. Please notice that the dimensions of the panels have a tolerance of +/- 3mm

More information: [vicoustic.com/products/vicshape-3d](https://www.vicoustic.com/products/vicshape-3d)





Old Gold

## VicTiles 3D MidMod

MidMod is a new line of 3D Tiles driven by the unique qualities of PET HD, drawing inspiration from the iconic mid-century design style of the 1950s.



Black



Coral Haze



Glacier



Gleam



Marmalade



Pearl

---

**Dimensions\***: 297.5 × 297.5 × 38 mm / 11.7" × 11.7" × 1.5"; **Packaging**: 4 units/box; **Materials**: High-density PET; **Installation**: Double-sided Adhesive Pad (included)

\* Dimensions per panel. Please notice that the dimensions of the panels have a tolerance of +/- 3mm

More information: [vicoustic.com/products/victiles-3d-midmod](https://vicoustic.com/products/victiles-3d-midmod)





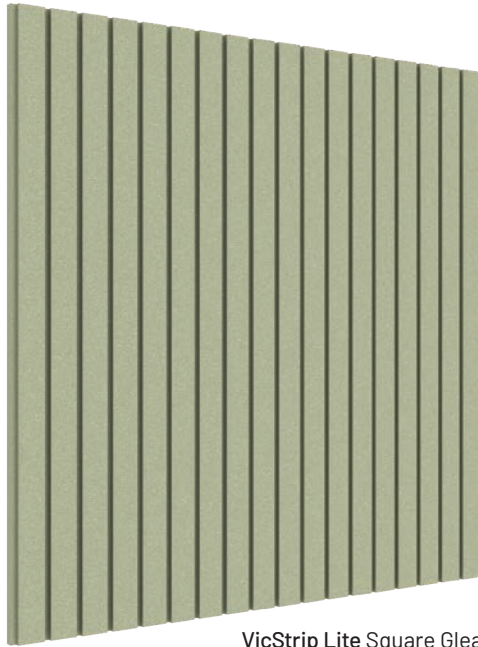
VicTiles 3D / MidMod **Pearl**



VicTiles 3D / MidMod **Glacier**



VicTiles 3D / MidMod **Gleam**



VicStrip Lite Square Gleam

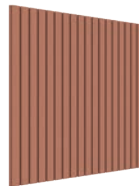
# VicStrip Lite

VicStrip Lite is an HD PET solution that combines striking design with acoustic performance. Crafted entirely from sustainable PET, it delivers excellent sound absorption, is easy to install, and features a moisture-resistant, easy-to-clean surface for long-lasting durability. Offered in a wide range of colors and created for true design lovers, VicStrip Lite brings elegance, comfort, and modern acoustic efficiency to any space.

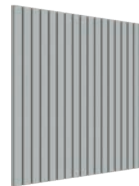
Available in 240cm, 270cm, Square and Double versions.



Black



Coral Haze



Glacier



Marmalade



Pearl

**Dimensions\***: A - 2400 × 595 × 12 mm / 94.5" × 23.4" × 0.47"; B - 2700 × 595 × 12 mm / 106.3" × 23.4" × 0.47"; C - 595 × 595 × 12 mm / 23.4" × 23.4" × 0.47";

**Packaging**: A, B - 1 or 4 units/box; C - 8 units/box; **Materials**: High-density PET; **Installation**: Flexi Glue Ultra

\* Dimensions per panel. Please notice that the dimensions of the panels have a tolerance of +/- 2mm

More information: [vicoustic.com/collections/vicstrip-lite](https://vicoustic.com/collections/vicstrip-lite)



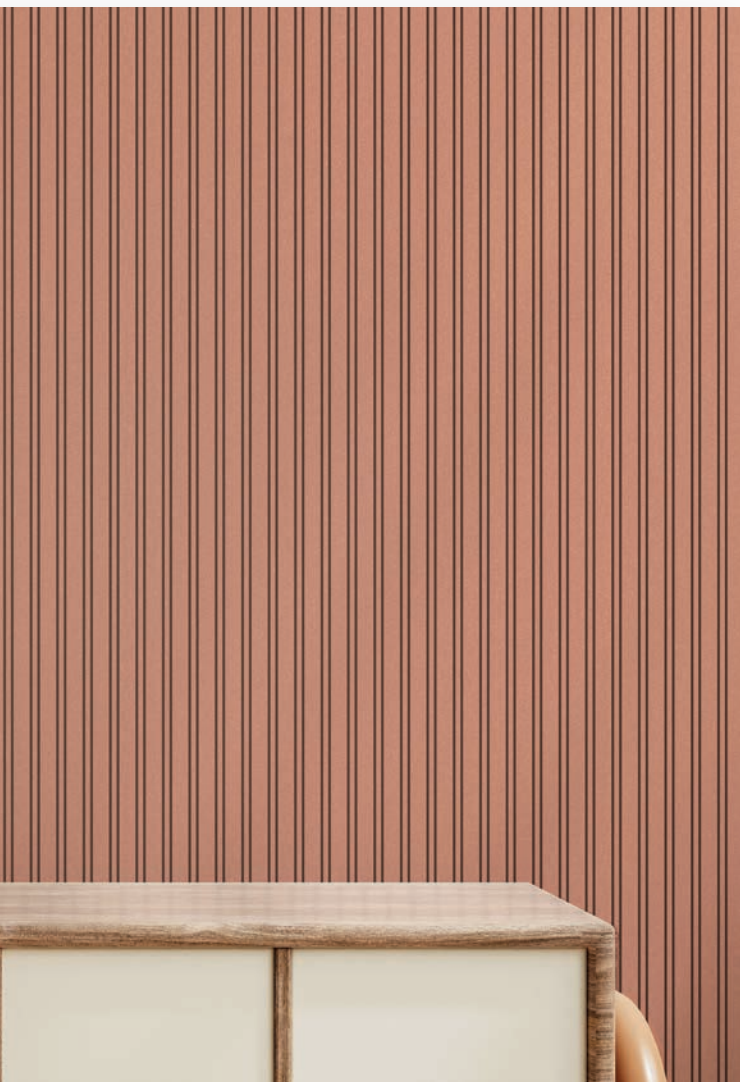
VicStrip Lite Square **Gleam**



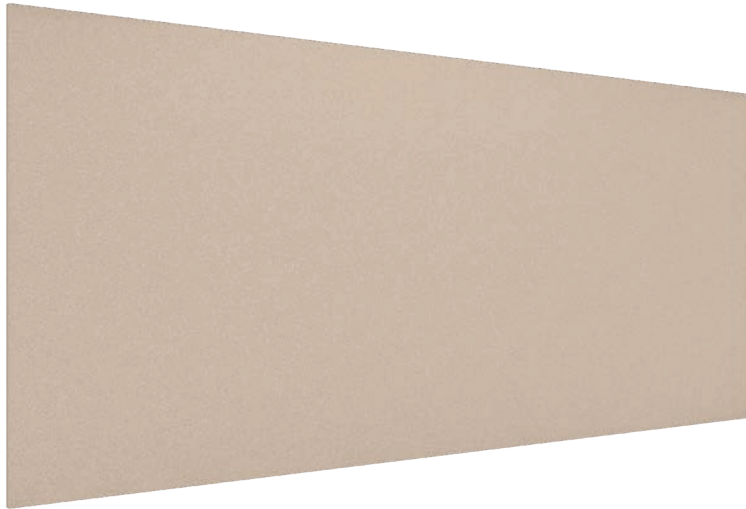
VicStrip Lite **Pearl**



VicStrip Lite Double **Coral Haze**



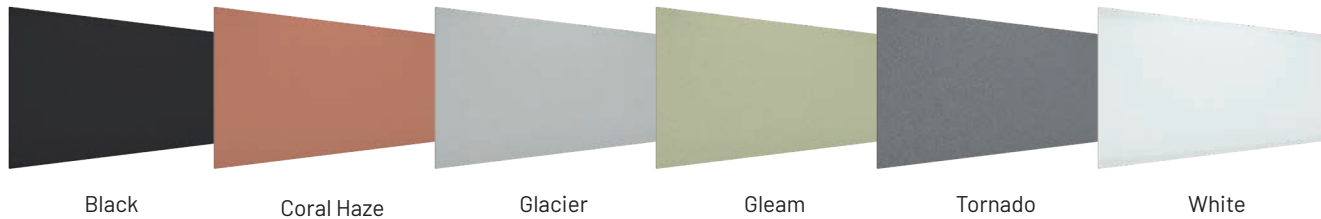
VicStrip Lite Double Square **Glacier**



## Flat Panel PET HD

Flat Panel PET HD delivers high-performance sound absorption for medium and high frequencies in a clean, modern form. Made mainly from recycled plastic, it ensures uniform color across the entire panel - edges included - as well as long-lasting durability, promoting superior indoor air quality and integrating seamlessly into any contemporary space.

Flat Panel PET HD Pearl



---

**Dimensions\***: 2800 × 1220 × 12 mm / 110.2" × 48.0" × 0.5"; **Packaging**: 8 units/box; **Materials**: High-density PET; **Installation**: Flexi Glue Ultra

\* Dimensions per panel. Please notice that the dimensions of the panels have a tolerance of +/- 3mm

More information: [vicoustic.com/products/flat-panel-pet-hd](https://vicoustic.com/products/flat-panel-pet-hd)



Flat Panel PET HD Pearl



Flat Panel PET HD **Tornado**



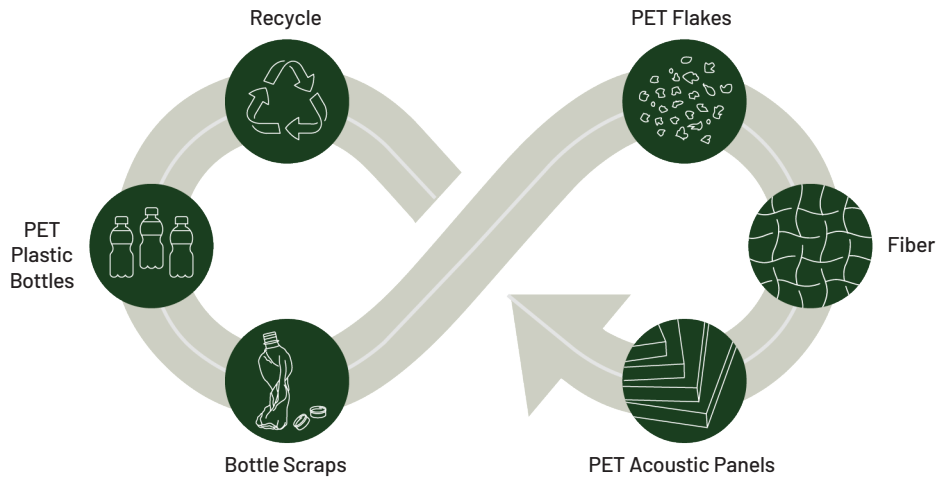
Flat Panel PET HD **Coral Haze**



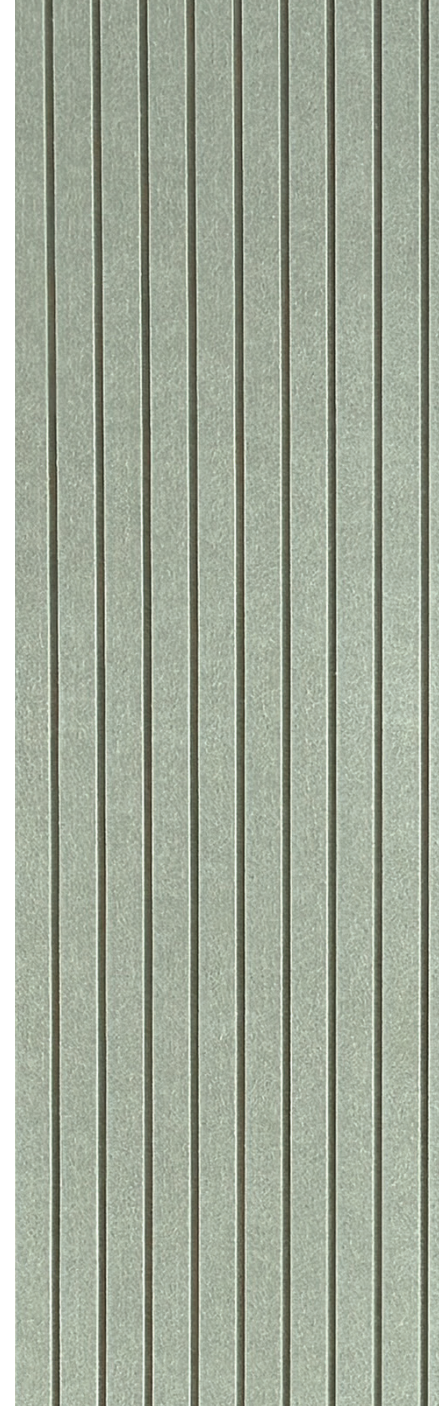
Flat Panel PET HD **Gleam**

# Sustainable, Safe & Recyclable

VicPET Wool transforms millions of discarded plastics into high-performance acoustic solutions that are as durable and beautiful as they are sustainable.



Embracing a circular economy, most of our portfolio is made from up to 70% post-consumer recycled content and is 100% recyclable.





VicStrip Lite **Gleam**



In order to have a reduced environmental footprint, this catalog was printed on recycled paper and with a lighter weight to optimize transport.



See all Catalogs

DEC 2025

# V/COUSTIC

INNOVATIVE ACOUSTIC SOLUTIONS



Cofinanciado pela  
União Europeia

Avenida do Pólo 3, N.º 159, Carvalhosa, 4590-137 Paços de Ferreira, Portugal P (+351) 255 070 044 E sales@vicoustic.com

[vicoustic.com](https://www.vicoustic.com)

Copyright 2025 by Vicoustic / No parts of this document may be copied and/or published without the written consent of Vicoustic.

This catalog is continually updated with new and amended details. Vicoustic accepts no liability for any eventuality arising from the use of errors contained in this catalog. Vicoustic reserves the right to correct errors and misprints.

The pictures shown are merely illustrative and might differ from the actual products.